

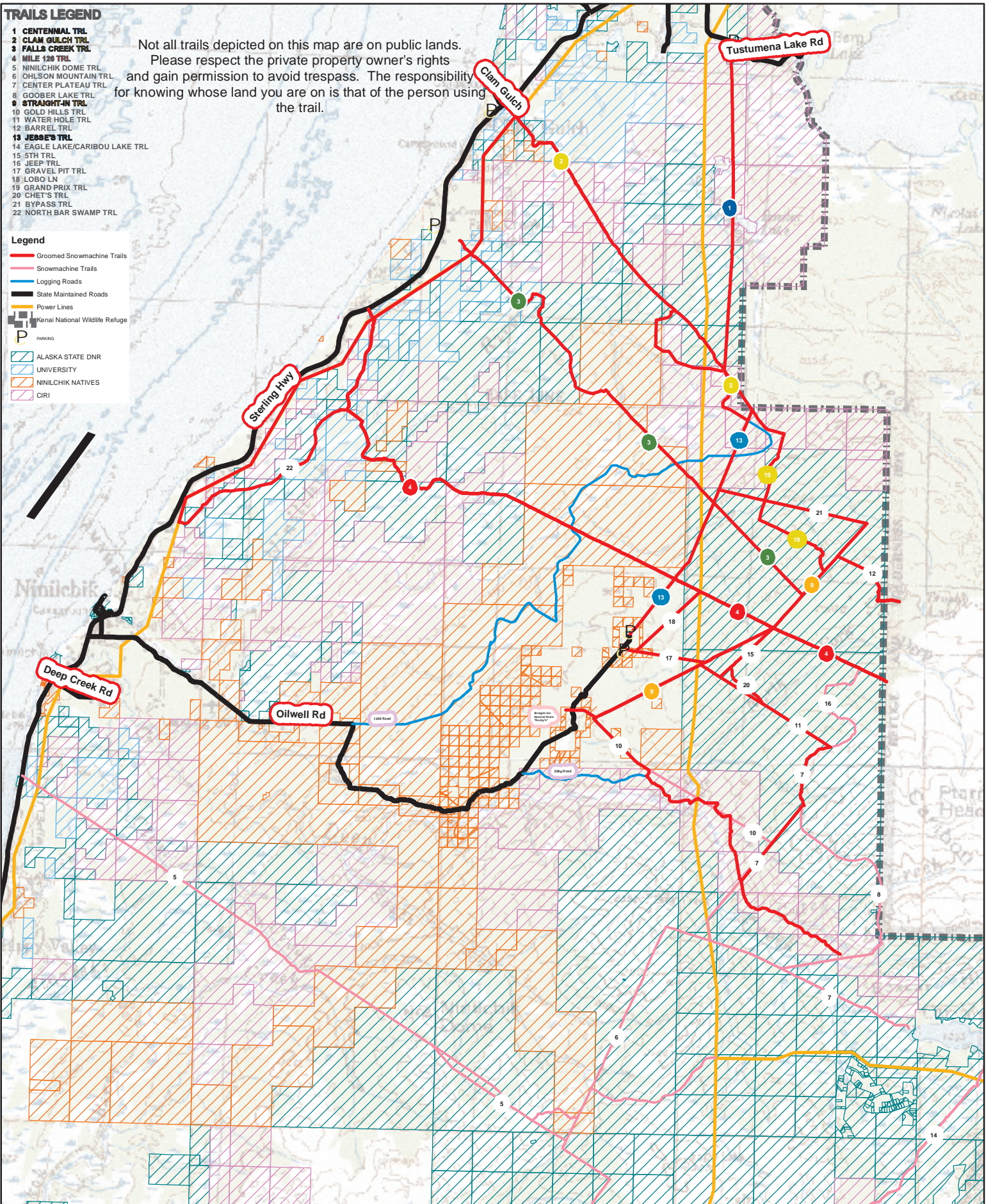
TRAILS LEGEND

- 1 CENTENNIAL TRL
- 2 CLAM GULCH TRL
- 3 FALLS CREEK TRL
- 4 MILE 126 TRL
- 5 NINILCHIK DOME TRL
- 6 OHLSON MOUNTAIN TRL
- 7 CENTER PLATEAU TRL
- 8 GOOBER LAKE TRL
- 9 STRAIGHT-IN TRL
- 10 GOLD HILLS TRL
- 11 WATER HOLE TRL
- 12 BARREL TRL
- 13 JESSE'S TRL
- 14 EAGLE LAKE/CARIBOU LAKE TRL
- 15 5TH TRL
- 16 JEEP TRL
- 17 GRAVEL PIT TRL
- 18 LOBO LN
- 19 GRAND PRIX TRL
- 20 CHET'S TRL
- 21 BYPASS TRL
- 22 NORTH BAR SWAMP TRL

Not all trails depicted on this map are on public lands. Please respect the private property owner's rights and gain permission to avoid trespass. The responsibility for knowing whose land you are on is that of the person using the trail.

Legend

- Groomed Snowmachine Trails
- Snowmachine Trails
- Logging Roads
- State Maintained Roads
- Power Lines
- Kenai National Wildlife Refuge
- PARKING
- ALASKA STATE DNR
- UNIVERSITY
- NINILCHIK NATIVES
- CIRI



KENAI PENINSULA BOROUGH
GIS DIVISION
144 N BINKLEY ST
SOLDOTNA, AK 99669

Copyright 2004 KENAI PENINSULA BOROUGH

Caribou Hills Trails Map



The information depicted hereon is for a graphical representation only of best available sources. The Kenai Peninsula Borough assumes no responsibility for any errors on this map.